

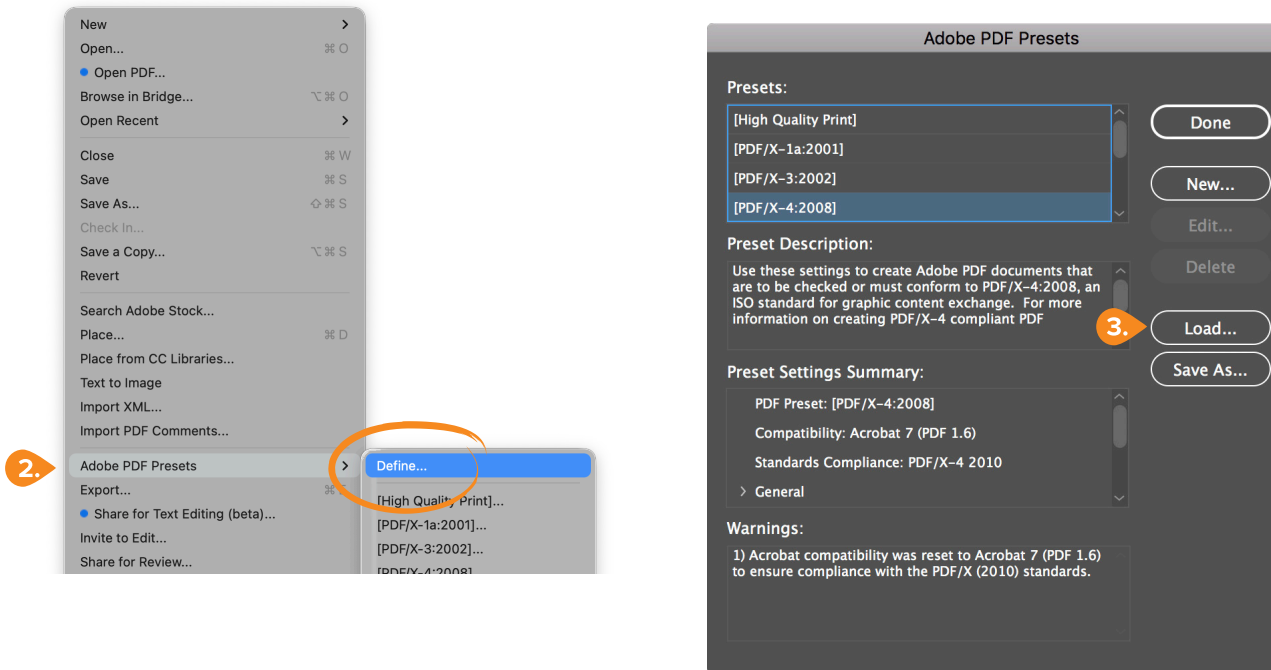
## InDesign–Exporting PDFs

### Adobe PDF Presets

Before you export a PDF, verify your document is built to the final trim size with an 1/8 inch (.125 inches) for Bleed and at least an 1/8 inch (.125 inches) for Margins. See: [Getting it Right, Right from the Start.](#) ↓

Adobe PDF Presets are saved as joboptions and work with Adobe InDesign CS2 and later.

1. Download our PDF Preset for InDesign by clicking the link: <https://www.walsworth.com/client-tools> ↓
2. Open Adobe PDF Presets dialog (File > Adobe PDF Presets > Define).
3. Click Load... and locate our preset you downloaded in step 1
4. When you're ready to export a PDF, choose File > Adobe PDF Presets > Walsworth\_PDF Preset\_7.21.20



#### Quick Start Guides

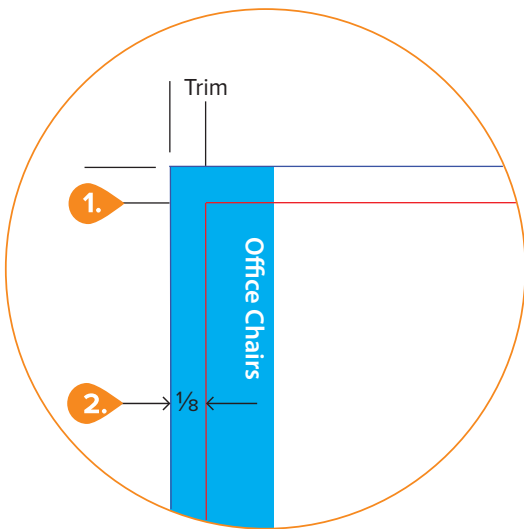
We have created a series of Quick Start Guides for Creative Professionals. Visit: [walsworth.com/quick-start](https://www.walsworth.com/quick-start)

# Quick Start Guide

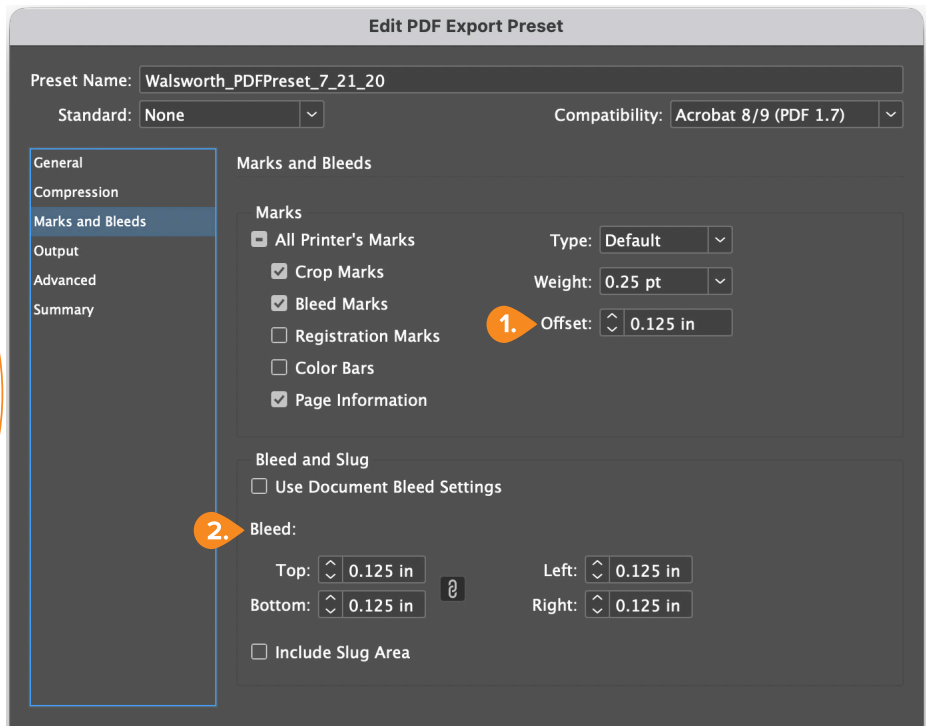
## InDesign–Exporting PDFs

### Marks and Bleeds

Our PDF Export Settings for InDesign use an 1/8 inch (.125 inches) for the Bleed amount and an 1/8 inch (.125 inches) for the Offset in the Marks and Bleeds section of the PDF Export dialog box.



Adobe Acrobat: Output Preview panel, click Show art, trim and bleed boxes.



#### Acrobat Pro

Use the Print Production tools in Adobe Acrobat Pro to examine your PDF before submitting it.

- ✓ **Inks:** Use the Output Preview Panel to verify the inks in your PDF. Unless you are printing with Spot colors, you should only have CMYK inks. You can also verify that black type does not contain Cyan, Magenta or Yellow.
- ✓ **Image Resolution:** Images should have a minimum resolution of **200 ppi**. Use Preflight to check image resolution.
- ✓ **Trim Size:** Use Set Page Boxes to verify final trim size.
- ✓ **Live Area:** Verify text and images are a minimum of an **1/8" (.125 in)** inside the trim.
- ✓ **Bleed:** Verify that images and backgrounds intended to extend to the edge of the page are extended an **1/8" (.125 in)** beyond trim.